

GOJO ADX-7™ & ADX-12™ DISPENSER INSTALLATION INSTRUCTIONS

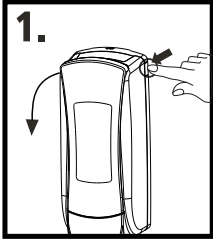
These instructions apply to GOJO®, PURELL®, PROVON® brand ADX-7, ADX-12 dispensers, and MICRELL®, HAND MEDIC® brand ADX-7 dispensers.

Please carefully read all instructions before installing and using the dispenser.

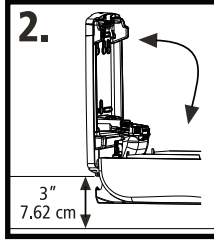


Install and Load Refill

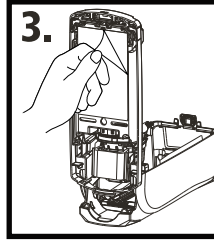
Do not install in locations where dispenser may be exposed to wet environments, such as showers or areas where walls are washed down.



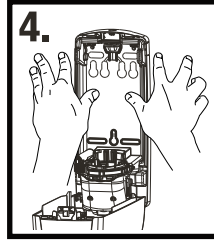
1. Open dispenser by pushing on one of the dual side latches until it releases.



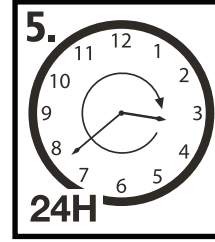
2. Install dispenser at least 3" (7.62 cm) above counter top.



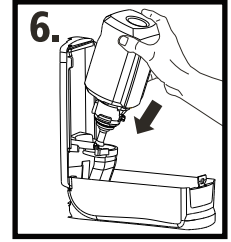
3. Peel paper off installation tape. Clean installation surface with an alcohol pad. Allow surface to dry for 60 seconds.



4. Press firmly on back plate for 10 seconds.



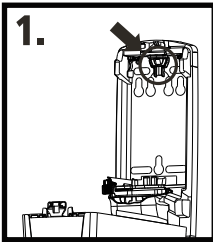
5. Wait 24 hours before loading refill.



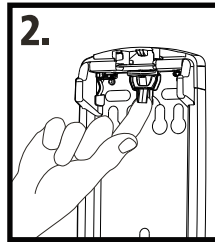
6. Push refill pump down into pump house ensuring collar snaps into place.



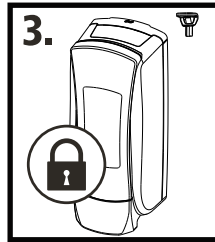
LOCK OR NOT™ Technology



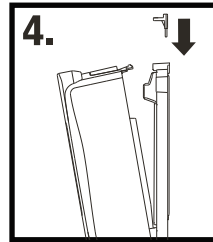
1. The key to lock the dispenser is located in the key mount on the inside of the dispenser.



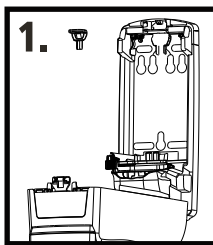
2. To lock the dispenser, remove key from the key mount on the inside of the dispenser.



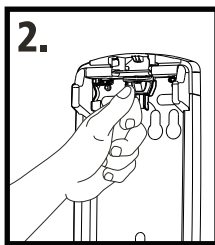
3. The dispenser is now locked.



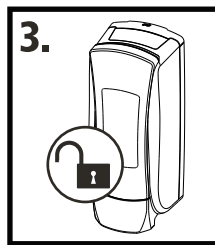
4. To open a locked dispenser, insert key into the key hole on the top of dispenser.



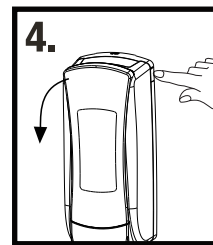
1. Open the locked dispenser by inserting the key into the key hole on the top of dispenser.



2. To return to unlocked, return the key to the mount on the inside of the dispenser.



3. The dispenser is now unlocked.



4. Open the dispenser by pushing in one of the dual side latches until it releases.



GOJO Industries, Inc.
One GOJO Plaza, Suite 500
P.O. Box 991 • Akron, OH 44309-0991
Tel: 1-330-255-6000 • Toll-free: 1-800-321-9647
Fax: 1-800-FAX-GOJO

©2014. GOJO Industries, Inc. All rights reserved.